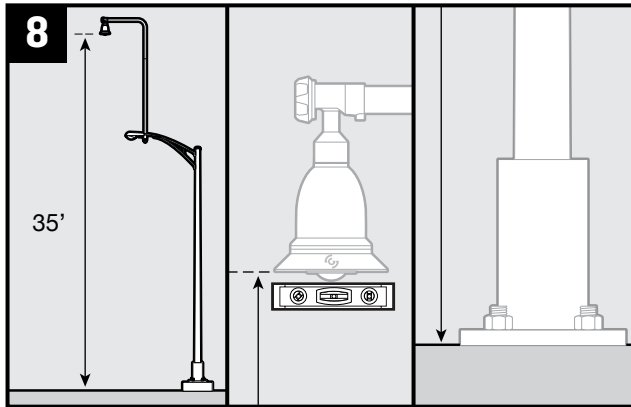


## INSTALLATION (continued)



### VERY IMPORTANT

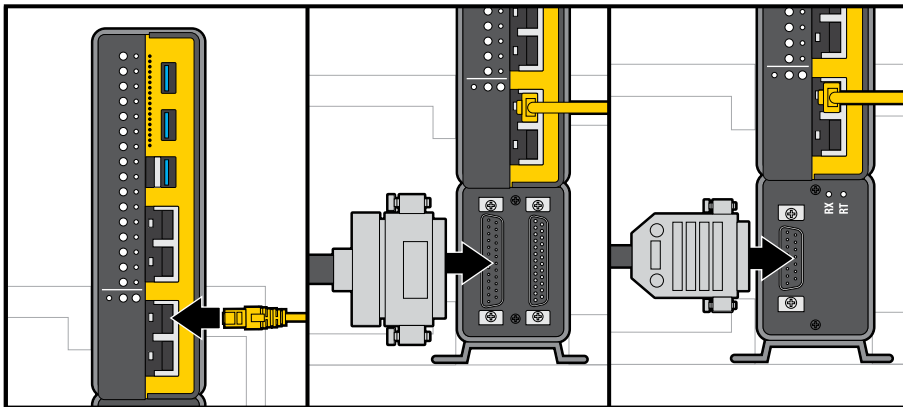
SMARTMOUNT Bell should be mounted at least 35' above the roadway. Using a tape measure, measure the height of SMARTMOUNT Bell. Record the height for use later to set up system. Orient the "G" logo away from area of consequence, ensure all approaches are fully visible, level the SMARTMOUNT Bell, and tighten the center set screw.

**!** Ensure luminaires, signal heads, and other potential obstructions do not block the camera view of important regions.

## GROUNDING AND FINAL INSTALLATION



Install your EPM, according to the instructions supplied with it, before continuing to the next step.



After completing your EPM instructions, connect the supplied CAT5e cable to the Processor CAMERA port or your ETA. Connect TS1, TS2, or ITS wiring harness to Processor

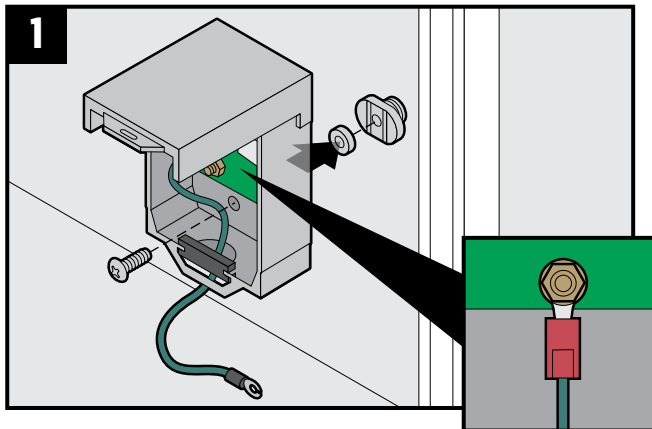
## TOOLS AND ITEMS NEEDED

- 7/16" Wrench
- 1/2" Wrench
- 3/4" Wrench
- 1/4" Wrench
- 3/32" Wrench
- 17 mm Wrench
- Utility knife
- Phillips screwdriver
- Flat-head screwdriver
- 1/2" Drill bit
- 5/32" Allen wrench (included)
- Mounting bracket
- CAT5e test cable
- 24AWG Shielded CAT5e cable
- RJ-45 Crimper
- Laptop (with GRIDSMART Client installed)
- EXO Crimp frame
- Ground wire clamp (included)
- USB flash drive
- Cable tester
- Hand level
- DLG Di-120b Tester

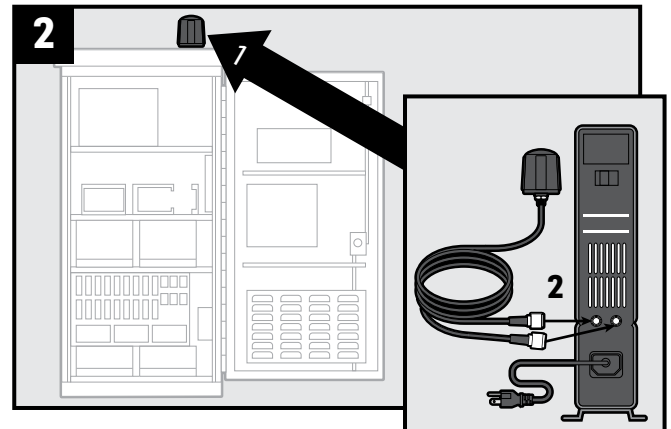


## BEFORE INSTALLATION

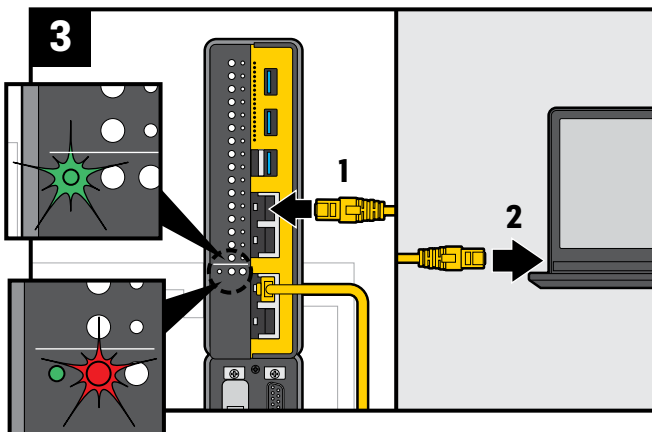
**Helpful tip:** On your laptop, verify that the GRIDSMART Client is updated to the latest software version. Download the latest update stick from gridsmartcloud.com.



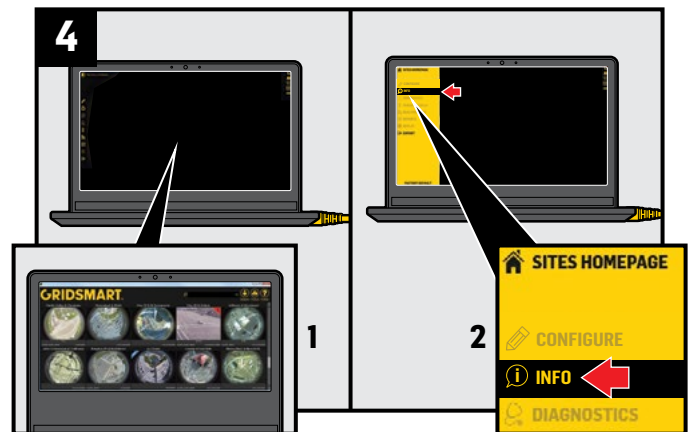
Install EPM onto cabinet DIN rail on opposite side from power distribution. Cut along rubber grommet "X". Connect 10AWG ground wire as close to ground rod as possible using ground wire clamp.



Mount Antenna to top of cabinet using 1/2" drill bit. Connect two CELL Antenna leads to both female connectors on back of Processor. **Not applicable for GS-3-GS2-MM**



Connect Processor to power source and power on (status light turns green in 2-3 minutes). **DO NOT USE A GFCI TYPE OUTLET.** Connect laptop to "LAPTOP" port on Processor with a CAT5e cable.



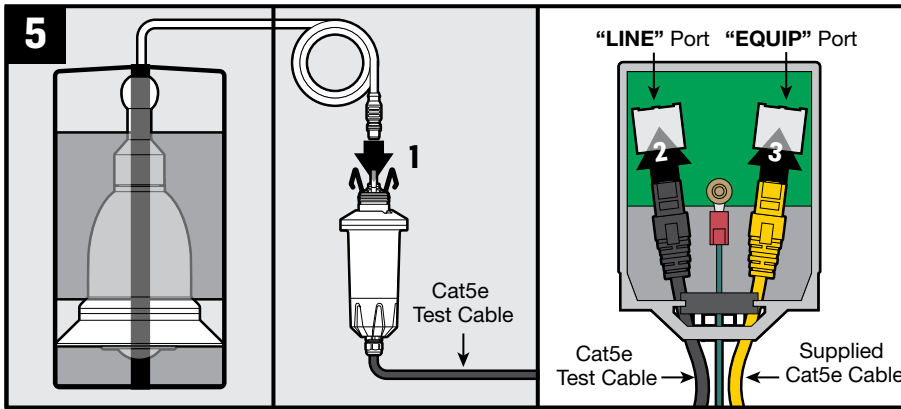
Launch GRIDSMART Client on laptop. Select factory default site card. Select "Info", verify "Site Info" version.

**NOTE:** The SMARTMOUNT Bell Camera has not yet been connected, so there will be no Camera image.



**SMARTMOUNT Luminaire (LU):** Follow the instructions in the “Before You Start Guide” provided with your LU kit before proceeding to Step 5.

## BEFORE INSTALLATION (continued)

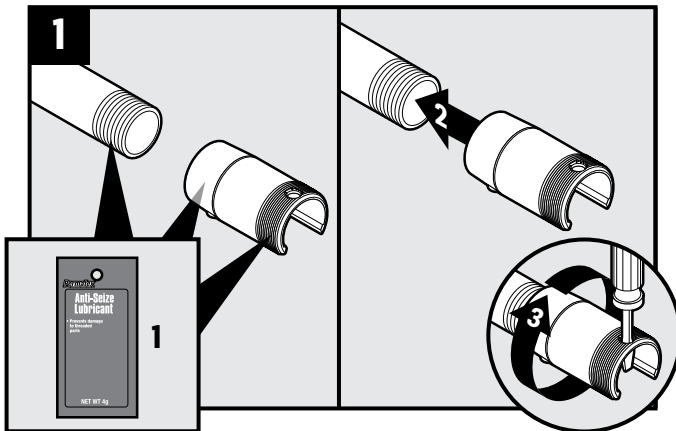


With SMARTMOUNT Bell in foam packaging, connect Camera cable to Junction Box upper connection. Connect one end of CAT5e test cable to Junction Box lower connection and remaining end to the EPM Module “LINE” port. Connect one end of supplied CAT5e cable to EPM Module “EQUIP” port and remaining end to Processor. Verify SMARTMOUNT Bell image. Camera status light turns green in 2-3 minutes.

After successful equipment test, disconnect cables to Junction Box, EPM, Processor and laptop. Leave cable connected to SMARTMOUNT Bell.

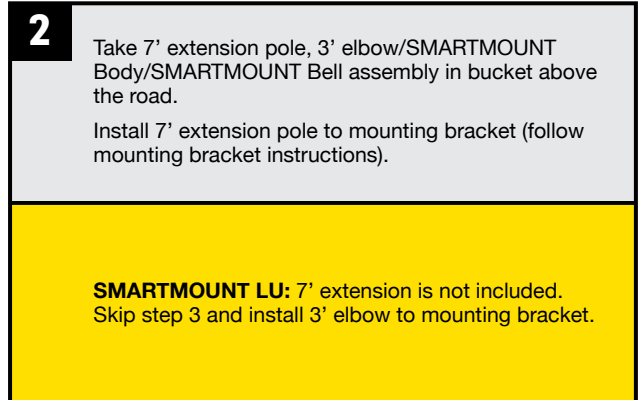
## INSTALLATION

**Helpful tip:** Before proceeding, route 24 AWG gel-filled, shielded, burial grade CAT5e cable from traffic cabinet to the SMARTMOUNT Bell mounting location.

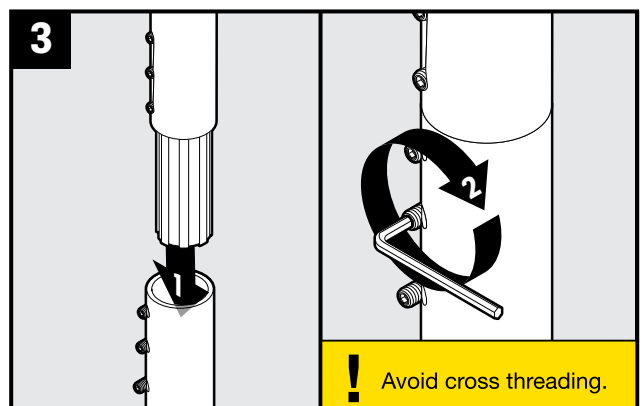


Apply anti-seize to 3' elbow and SMARTMOUNT body threads. Install SMARTMOUNT body to upper end of 3' elbow turning clockwise to secure.

**NOTE:** SMARTMOUNT body opening must be facing down in final position.



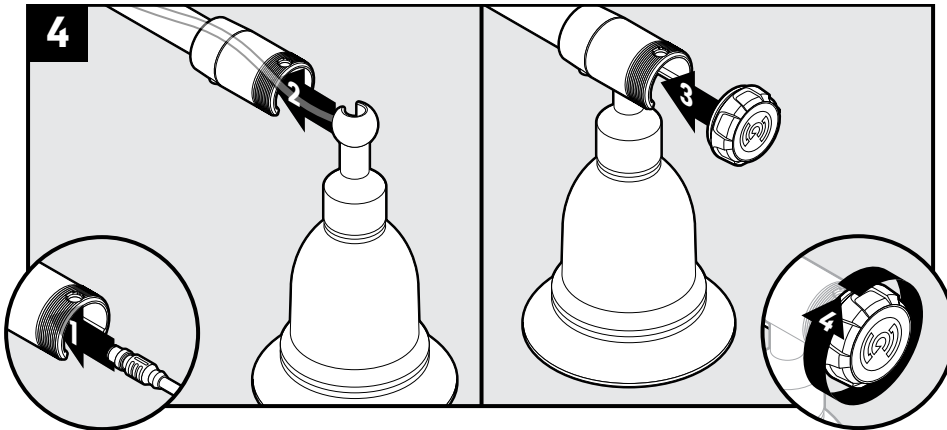
**SMARTMOUNT LU:** 7' extension is not included. Skip step 3 and install 3' elbow to mounting bracket.



Insert 3' elbow connector into 7' extension using pole connector. Tighten screws with Allen wrench to secure.

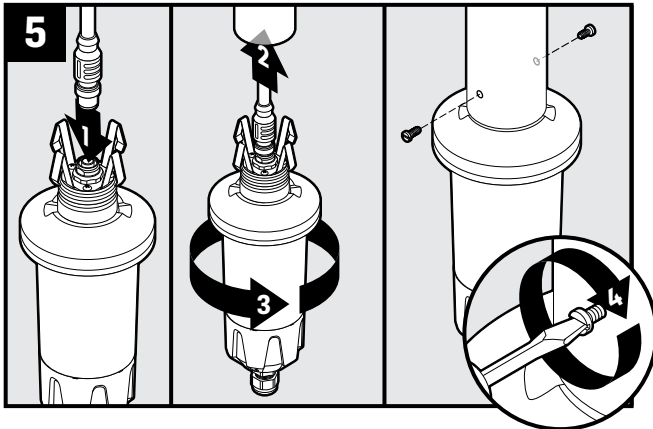
# SMARTMOUNT BELL CAMERA INSTALLATION GUIDE

## INSTALLATION (continued)

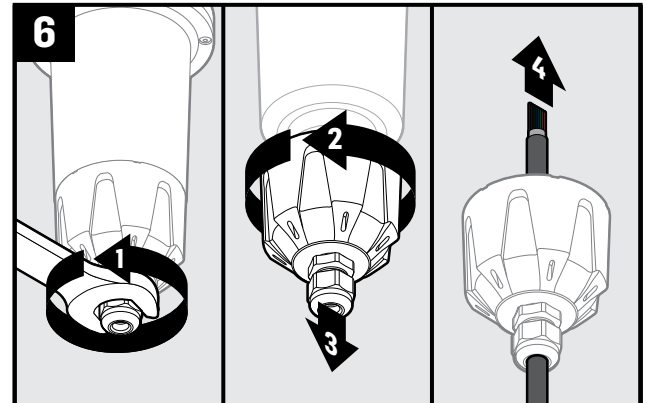


Feed SMARTMOUNT Bell cable through pole assembly. Slide SMARTMOUNT Bell ball joint into SMARTMOUNT body, being sure the ball joint opening is well aligned with body/pole opening so as not to damage cable.

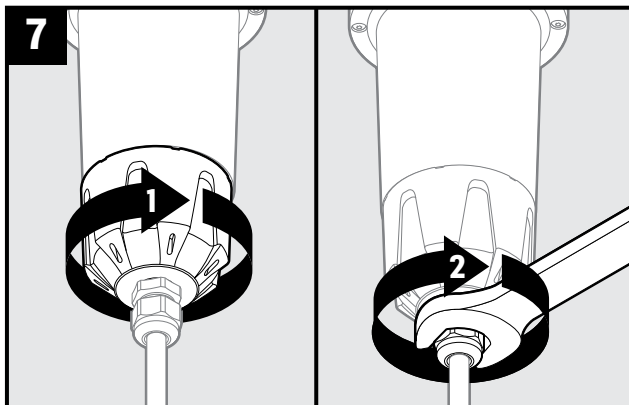
Secure SMARTMOUNT Bell to SMARTMOUNT body with cap. Turn cap clockwise to tighten.



Connect SMARTMOUNT Bell cable from pole assembly to junction box upper connection. Insert Junction Box (turning counter clockwise up to three times to prevent kinking or binding of cable) into pole. Install Junction Box set screws to pole to secure Junction Box. Tighten with flathead screwdriver.



Using a 3/4" wrench, loosen cord grip from cap on bottom of Junction Box. Loosen cap and remove from Junction Box. Push unterminated field cable through cord grip and cap. **Do not tighten cord grip until step 7.**



Replace cap onto Junction Box (hand-tighten) until fully closed. Tighten cord grip using a 3/4" wrench, to 30 in-lbs max torque. Tighten all set screws with flathead or hexhead screwdriver.

**!** If a cord grip is opened and intended to be reused, the cable **MUST** be re-terminated. This ensures a proper seal (the cord grip cannot be tightened down on the same part of the cable).