



Click here to print a copy of this document in PDF format.

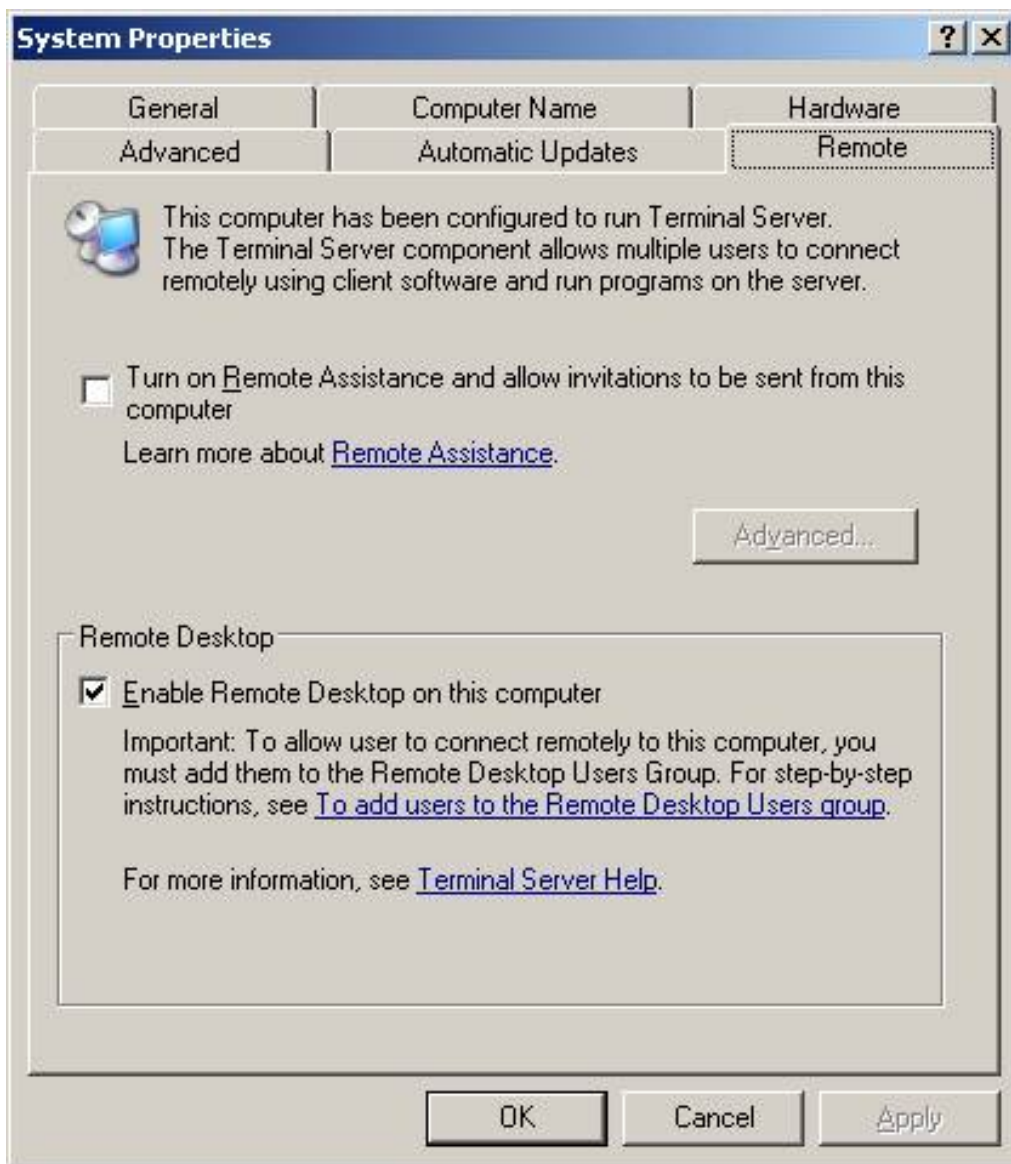
# TecNote 3101 - Setting Up Remote Desktop Access on the ATMS.now Communications Server

The purpose of this TecNote is to show the user how to configure the Communications Server Users to allow a Remote Desktop Client access to ATMS.now. This allows transportation professionals to access their ATMS.now system anywhere that there is an IP connection as long as they have a laptop or PC with windows XP.

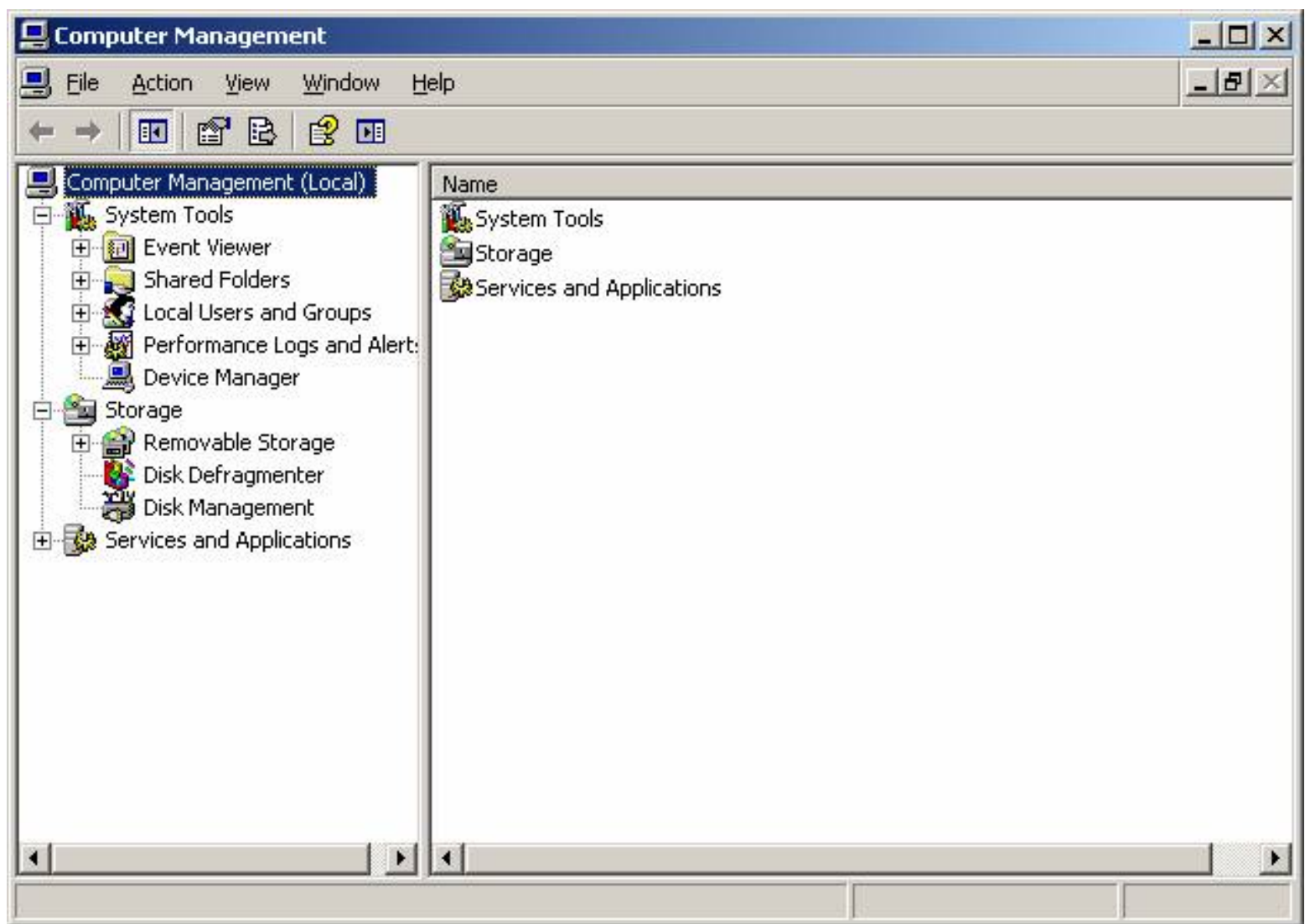
It is assumed that the Client has already been set up for remote access. This following procedures should be done only by an ATMS.now administrator, IT department or an authorized agent.

## Adding Users to the ATMS.now Server

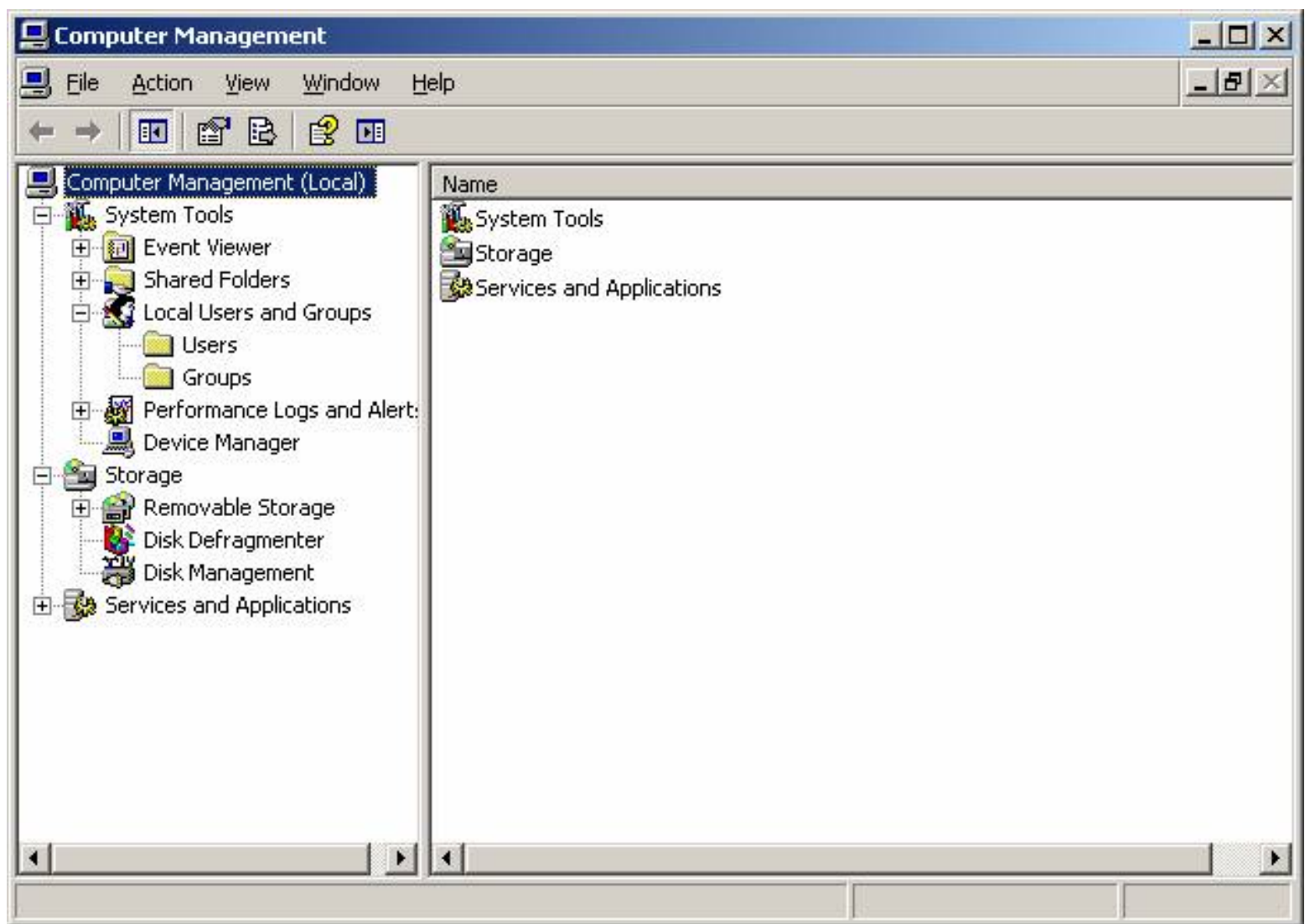
1) Enable remote desktop by right-clicking on the **My Computer icon** on the desktop. Choose **Properties**, then choose the **Remote tab** and check **Enable Remote Desktop**, then hit **OK**.



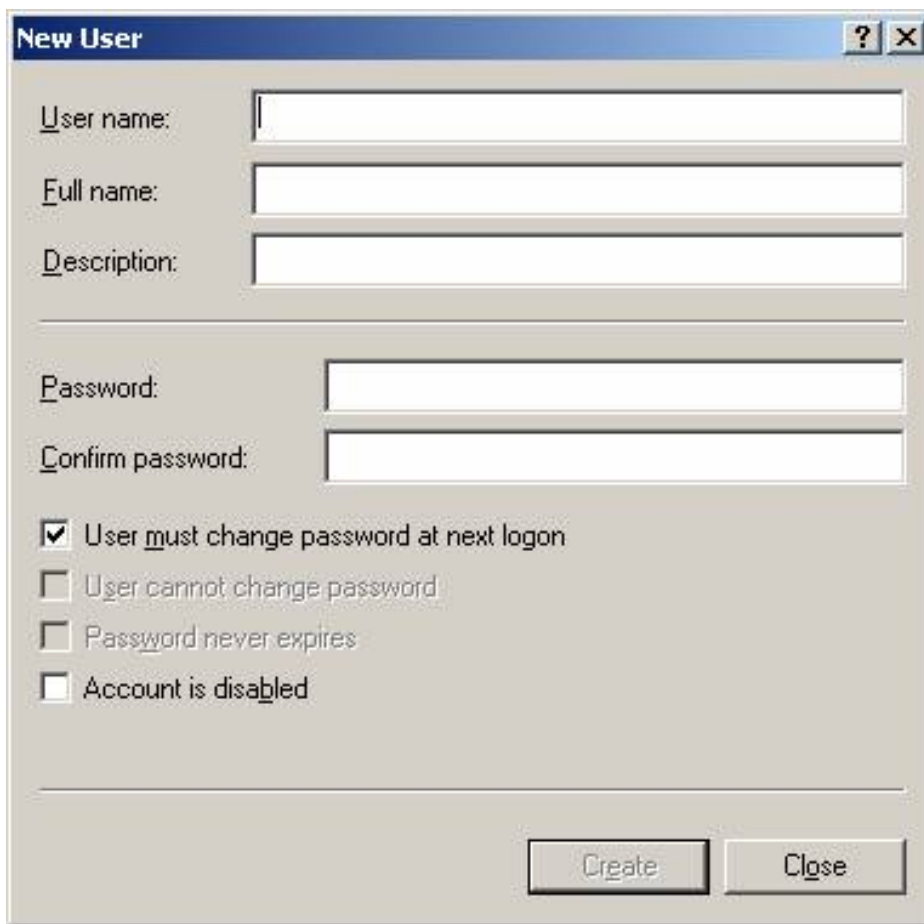
2) To add a User, Right-click on the **My Computer** icon on the desktop. Choose **Manage** .



3) Click the "+" next to **Local Users and Groups**.



4) Right-Click on the **User** folder and choose "*new user*". The following screen will come up:

A screenshot of a 'New User' dialog box. The dialog has a title bar with a question mark and a close button. It contains several input fields: 'User name:', 'Full name:', 'Description:', 'Password:', and 'Confirm password:'. Below these fields are four checkboxes: 'User must change password at next logon' (checked), 'User cannot change password', 'Password never expires', and 'Account is disabled'. At the bottom right are two buttons: 'Create' and 'Close'.

5) Enter:

a) ***User name***

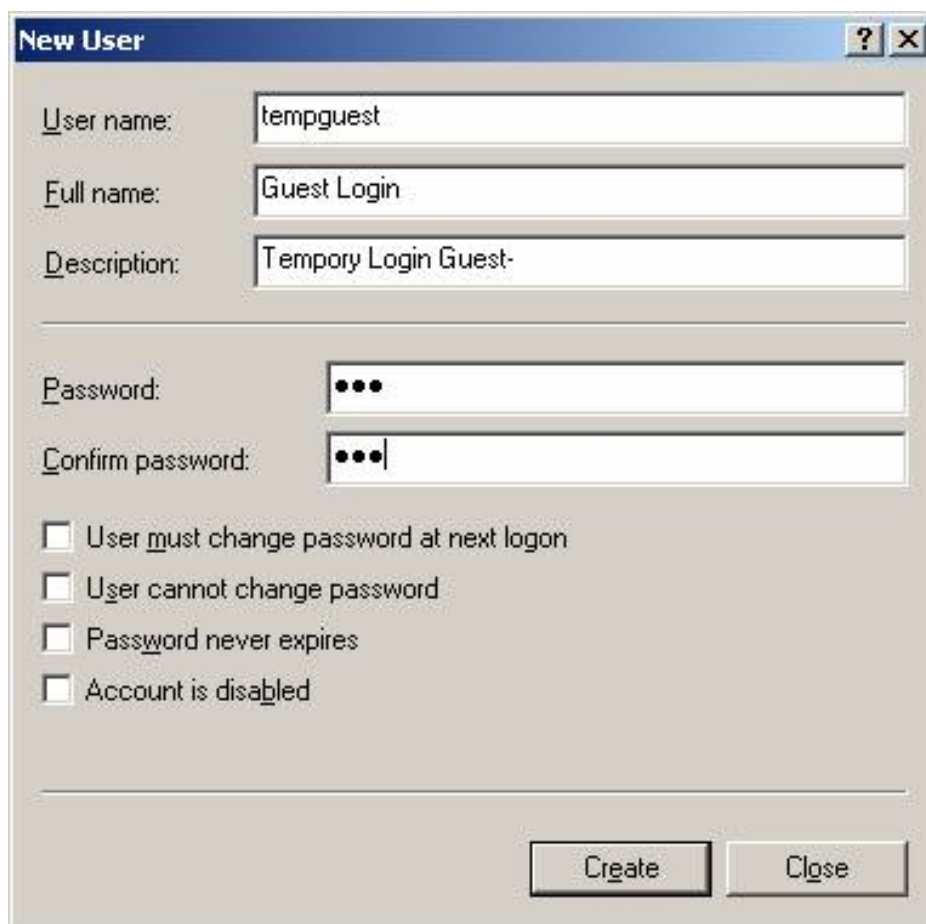
b) ***Password***

c) Un-check the option that says "***User must change password at next logon***"

d) Un-Check the option that says "***Password never expires***"

e) Click ***Create***

f) Click ***Close***



The image shows a 'New User' dialog box with a blue title bar containing a question mark and a close button. The dialog has several text input fields and a list of checkboxes. The 'User name' field contains 'tempguest', 'Full name' contains 'Guest Login', and 'Description' contains 'Temporary Login Guest-'. The 'Password' and 'Confirm password' fields are masked with dots. At the bottom, there are 'Create' and 'Close' buttons.

**New User**

User name: tempguest

Full name: Guest Login

Description: Temporary Login Guest-

Password: ...

Confirm password: ...

☐ User must change password at next logon

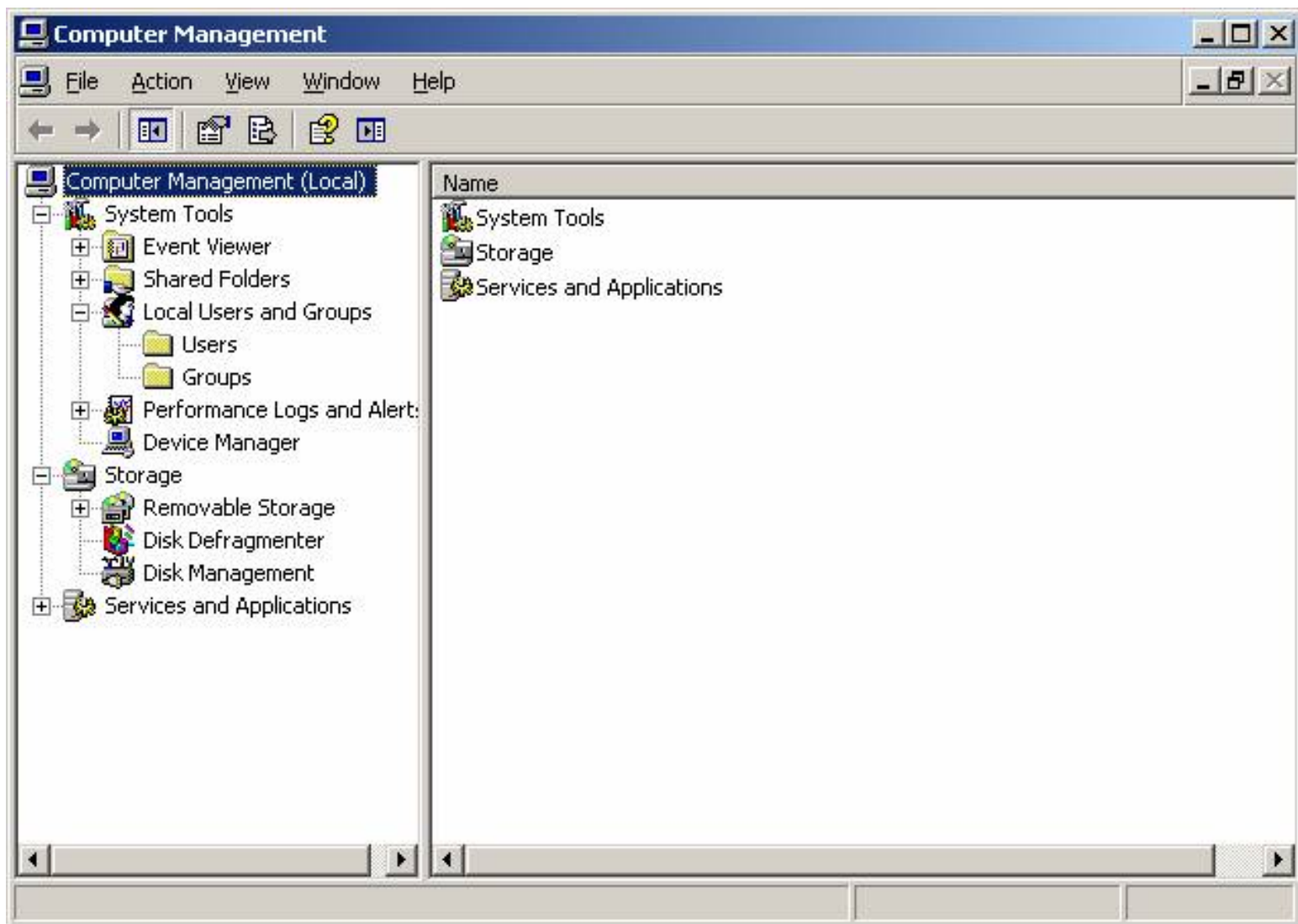
☐ User cannot change password

☐ Password never expires

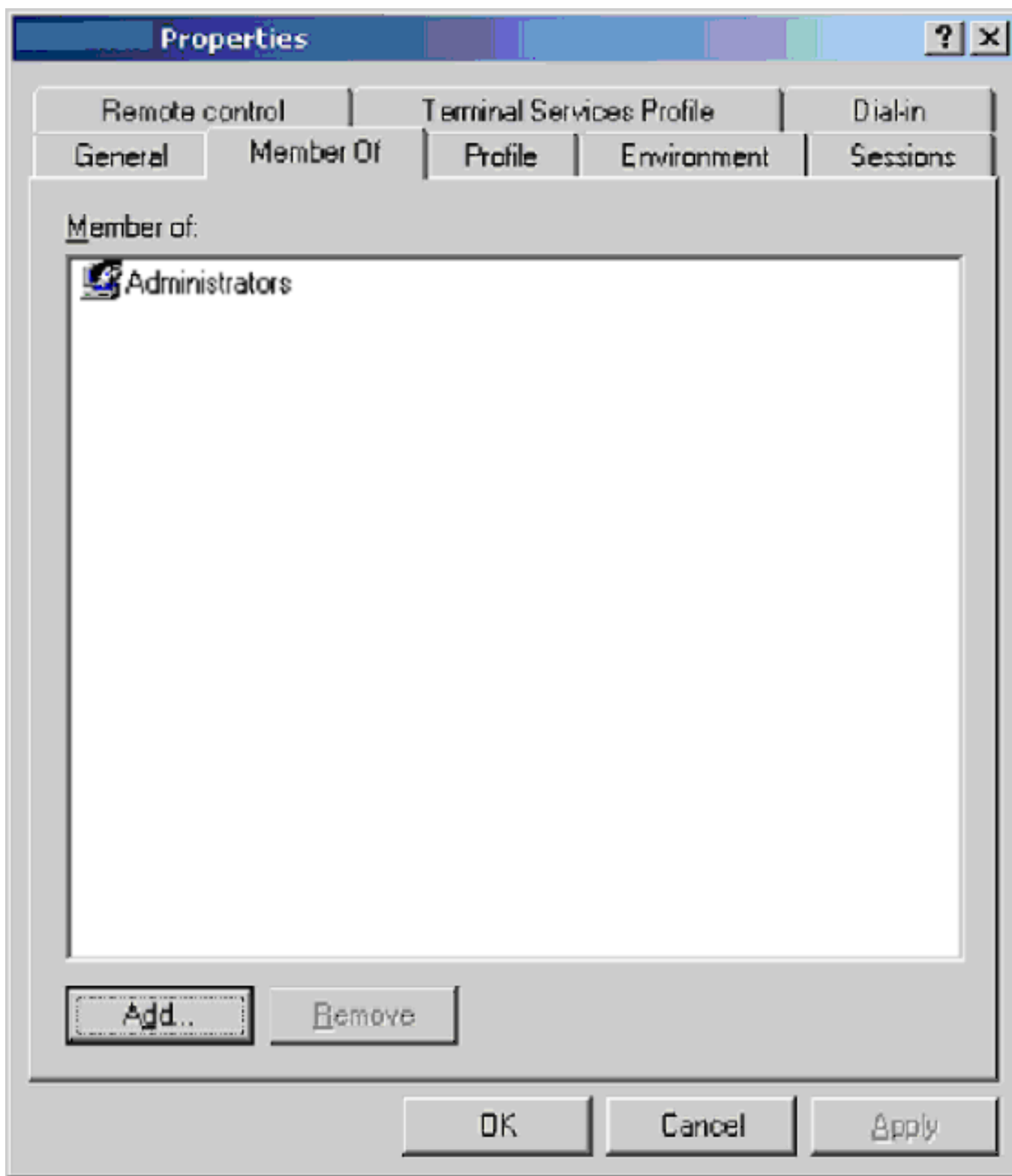
☐ Account is disabled

Create Close

6) This should take you back to the **Computer Management** screen.



7) Right Click on **Users** and choose **Properties**. Choose Tab called **Member Of** . Click **Add** .



8) Enter the ***Object names*** (the group that you want the user to belong to such as "***Administrators***" or "***Remote Desktop Users***", then hit ***OK***.

9) The Server is now set up for Remote Desktop access by that User.

## Summary

By using Windows remote Desktop Connection a user which is allowed access to an ATMS.now server can quickly work on their system from anywhere. This Tecnote, which discusses user setups on the server, should be done only by an ATMS.now administrator, IT department or an authorized agent.

---