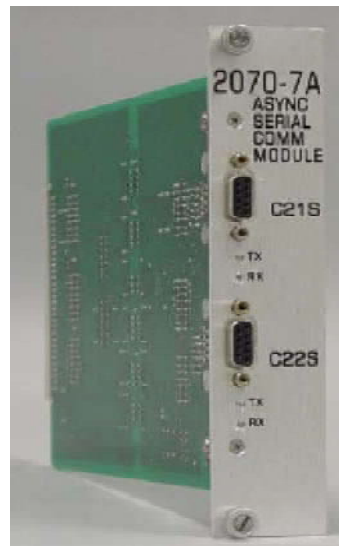
 [Click here to print a copy of this document in PDF format.](#)

TecNote 6006 - Setting up Naztec Video Detection to a TS2 or 2070 controller via a Serial Interface

The purpose of this TecNote is to explain to the interface of a Naztec Video Detection module by Traficon to the 2070 via its 2070-7A Asynchronous Serial Communications module.

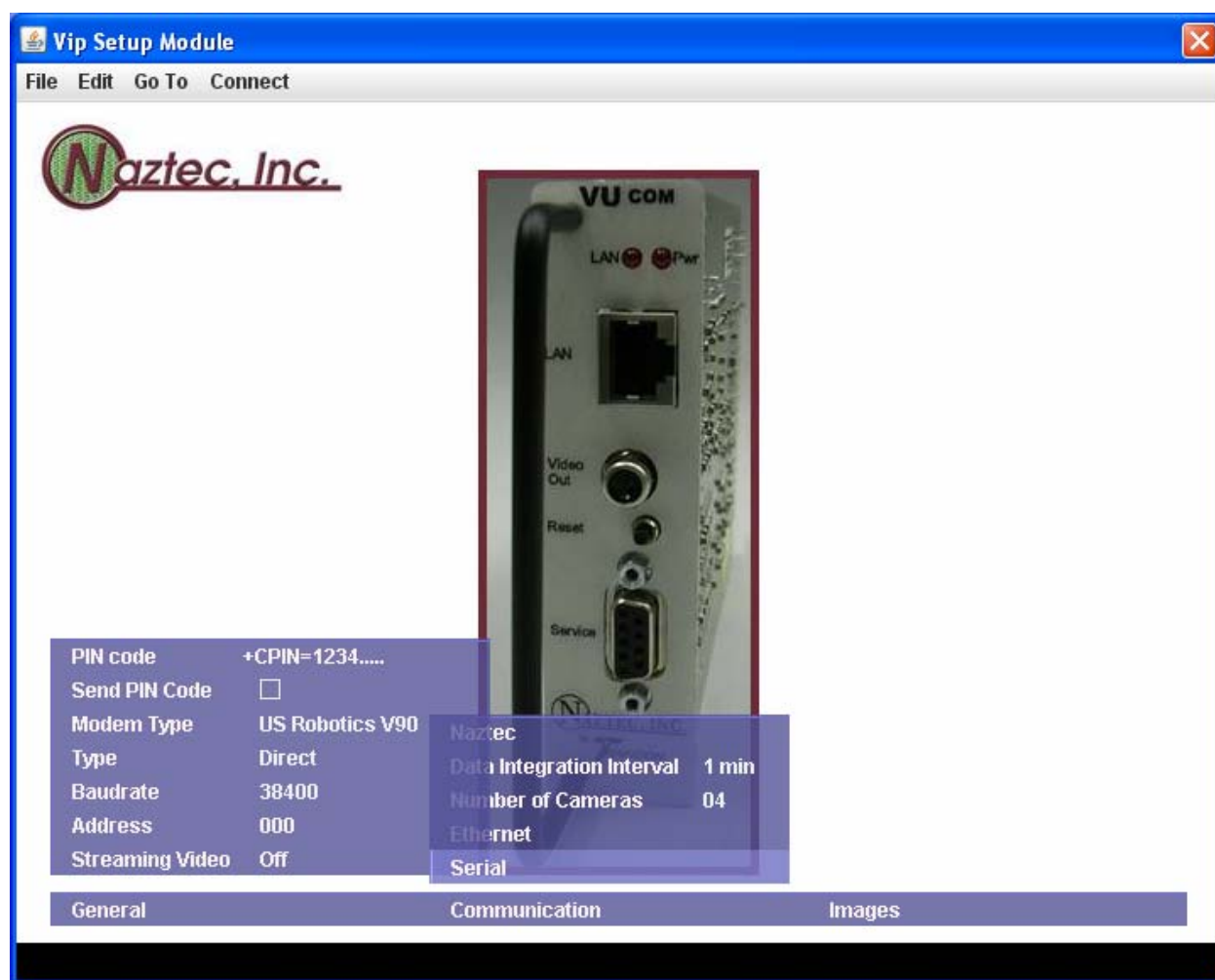


VuCom and VU1F / VU2F board setup considerations

1) Set VuCom serial communication parameters as shown below:

TYPE: Direct

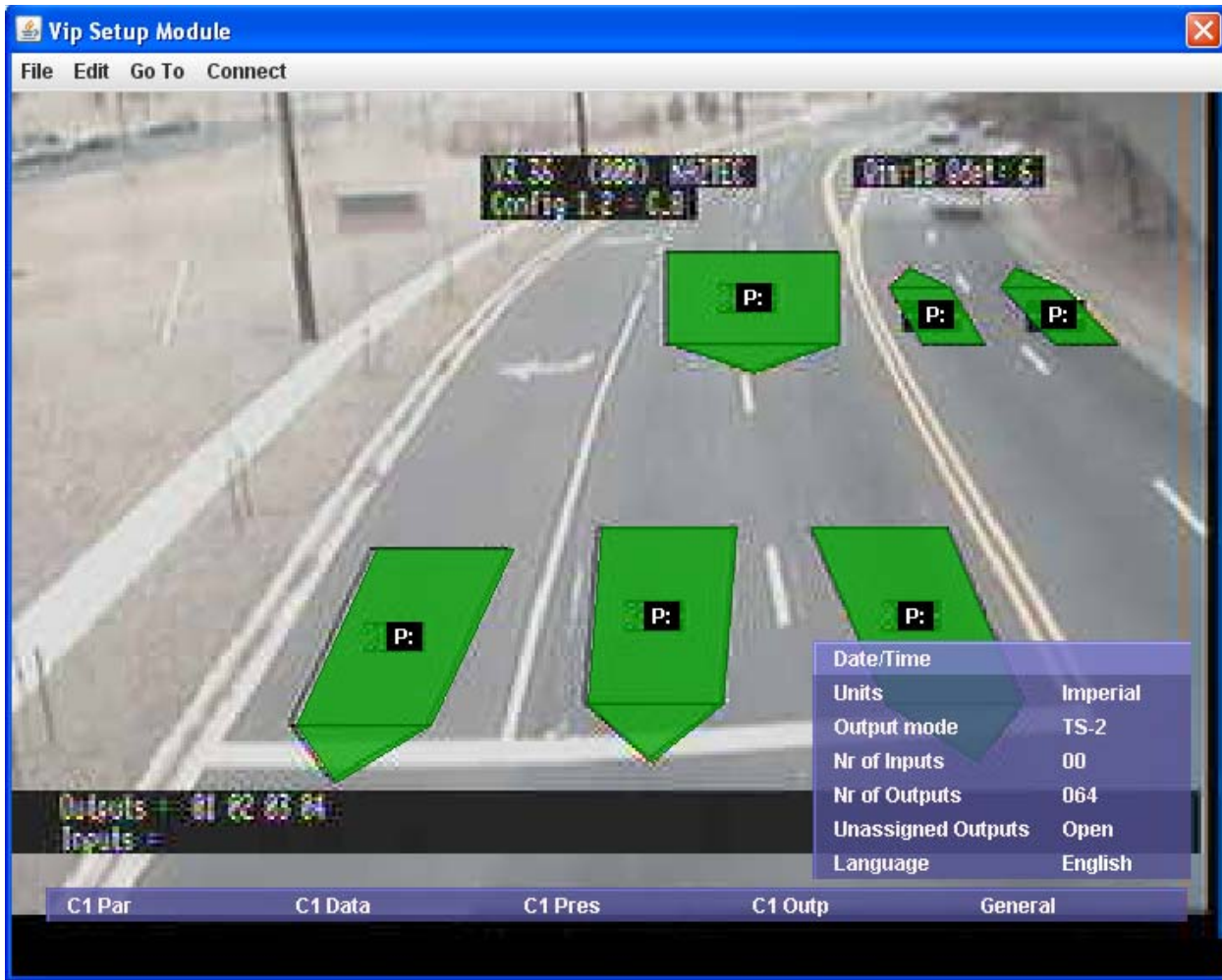
BAUD RATE: 38400



2) Set VU1F / VU2F General Parameters as shown below:

OUTPUT MODE: TS-2

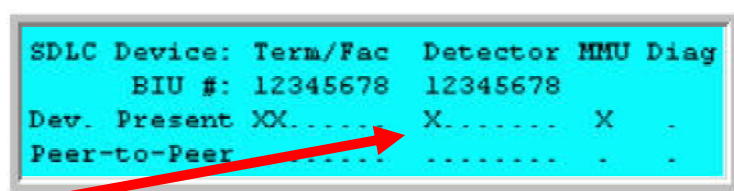
NR OF OUTPUTS: 64



TS2 Controller Setup considerations

1) The VUCom module will be communicating with a user selected Detector BIU facility. Program the BIU via the following:

a) Program detector BIU #X in MM->1->3->7 as shown below:



b) Please note that BIU #1 corresponds to detectors 1-16, BIU #2 corresponds to detectors 17-32, BIU #3 corresponds to detectors 33-48 and BIU #4 corresponds to detectors 49-64. Choosing specific detector BIU's allows users to mix inductive detectors with and video detectors, if needed.

2) Naztec TS2 cabinets contain a SDLC bus has attached SDLC cables. Connect a cabinet SDLC cable to the VuBIU card.

3) Turn on the proper BIU select switch on the VuBIU which matches the Detector BIU that was chosen in step 1 above.

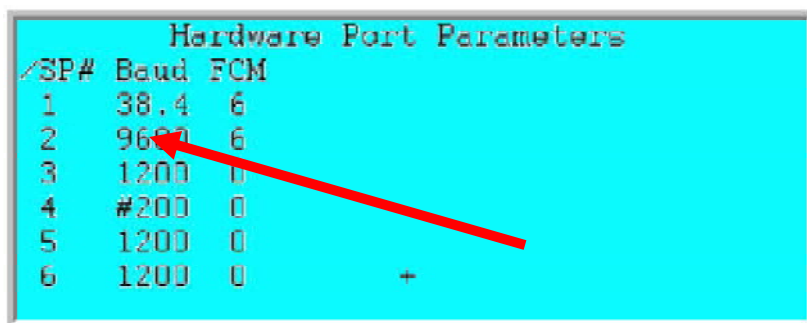


Please note that once the user chooses the BIU select switch selected, the detector numbers that will automatically be chosen that correspond to that BIU (see section 1b above). This selection must also be used as zones/output numbers on the VU1F / VU2F configuration when you create your detection zones.

2070 Controller Setup considerations

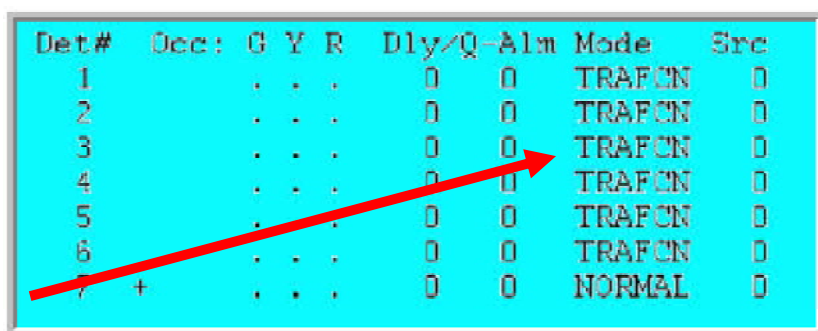
Setting up a 2070 controller to accept detection from VuCom Board should be done as follows:

1) In MM->6->2, set the baud rate for 38400 for an available serial port as shown below:



2) In MM->5->3, set the detector mode to “TRAFCON” for each video detector used.

***NOTE: This may require the user to download an updated firmware version to the 2070.**



Det#	Occ: G Y R	Dly/Q-Alm	Mode	Src
1	. . .	0 0	TRAFCON	0
2	. . .	0 0	TRAFCON	0
3	. . .	0 0	TRAFCON	0
4	. . .	0 0	TRAFCON	0
5	. . .	0 0	TRAFCON	0
6	. . .	0 0	TRAFCON	0
7	+ . .	0 0	NORMAL	0

3) Connect a straight through DB-9 serial cable between the VUCom module and the 2070-7A serial port that was set up as described above.

Summary

By using the steps as described above, users can simply interface Naztec Video Modules by Traficon to a 2070.
